

**PrivateAccess™**

---

# USER MANUAL

<i>English</i>	<hr/>	<b>3</b>
日本語	<hr/>	<b>7</b>

## Introduction

Welcome to PrivateAccess™!

PrivateAccess™ is a fast, simple way to store and protect critical and sensitive files on any iXpand Wireless Charger. Create a private vault and simply drag-and-drop your valuable files inside. Access to your vault is protected by your WD Account, and your files are automatically encrypted – so even if you share your iXpand Wireless Charger or it becomes lost or stolen, your files are safe.

When it comes to protecting your private files, you can trust SanDisk®!

### Supported Operating Systems:

- Windows® 7 □  
Windows 8
- Windows 10
- macOS Sierra – 10.12.
- macOS High Sierra – 10.13. □  
macOS Mojave – 10.14
- macOS Catalina – 10.15

### Required Hardware:

- Available USB port
- iXpand Wireless Charger
- MicroUSB to USB Cable  
(not provided)

## Getting Started

- 1) Connect the iXpand Wireless Charger to a PC or Mac via MicroUSB to USB Cable (not provided)
- 2) If using PC, double-click the executable file PrivateAccess\_win.exe to run the PrivateAccess software (Fig. 1). (Some computers may require you to open the computer directory to locate connected drive.) You can only install directly onto your connected SanDisk iXpand Wireless Charger "iXpand" disk.

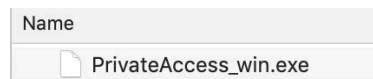


Fig. 1

- 3) If using Mac, double-click the executable file PrivateAccess\_mac and follow the wizard to install the PrivateAccess software.(Fig. 2). (You may require you to open the Finder). You can only install directly onto your connected SanDisk iXpand Wireless Charger "iXpand" disk. Please select this disk on Destination Select step.



Fig. 2

## How to access your vault?

---

- 1) Double click on the installed application to launch PrivateAccess. See (Fig. 3) for PC and (Fig. 4) for Mac.



Fig. 3

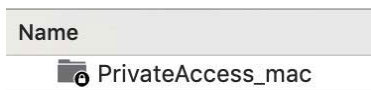


Fig. 4

2) Click 'Next' with or without clicking the check-box on the left. (Fig. 5 on next page)

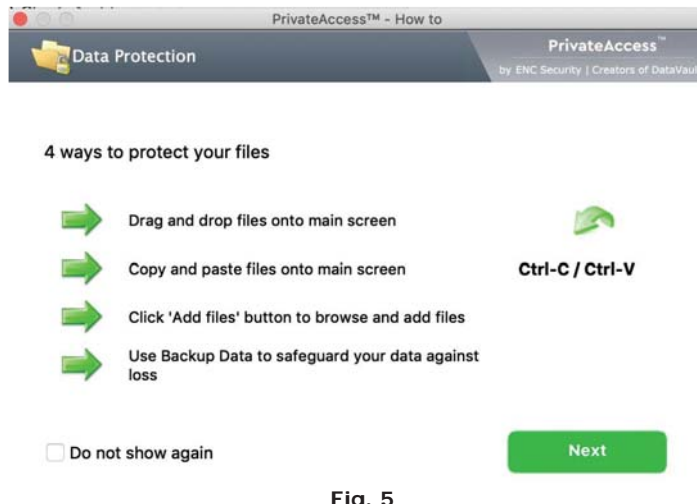


Fig. 5

You will now see your vault as in Fig. 6

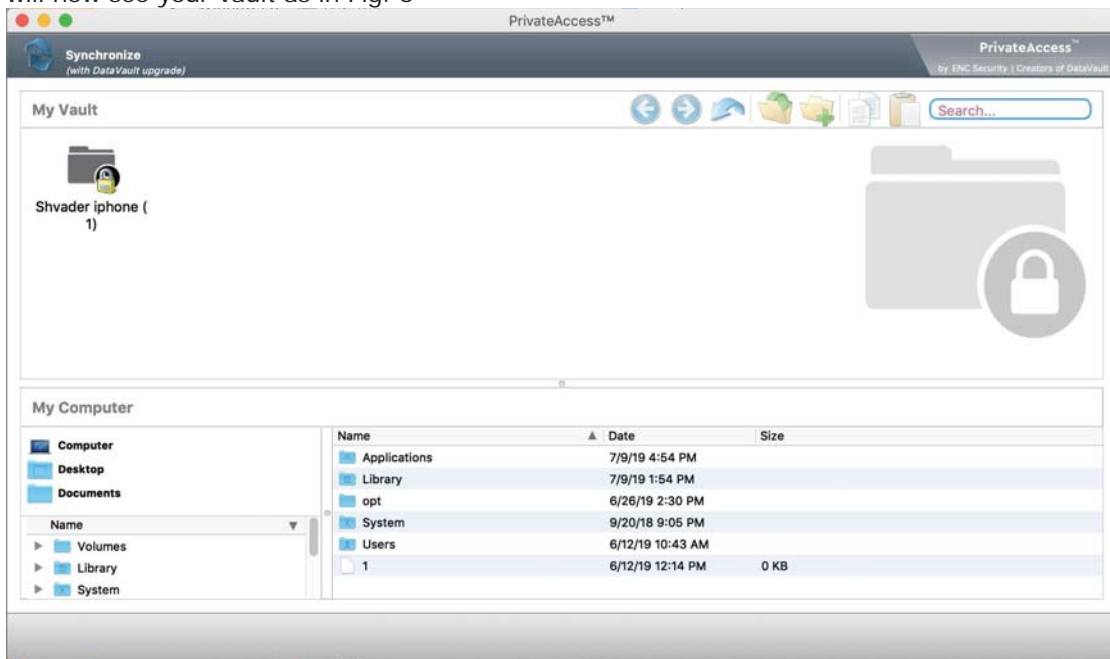


Fig. 6

3) Double-click on the vault and enter the WD Account login information created during the on-boarding of your iXpand Wireless Charger. (Fig. 7 on next page)

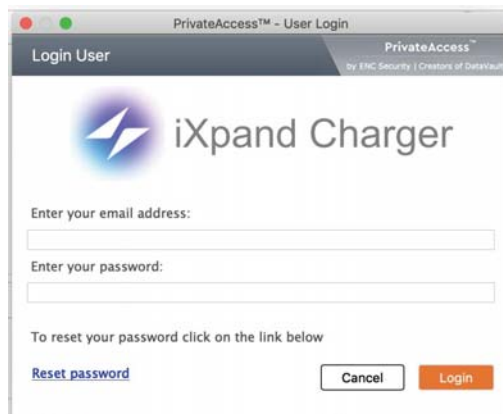


Fig. 7

You are now ready to keep your valuable and sensitive files in your new private vault, and protect access to them in the main screen! (Fig. 8)

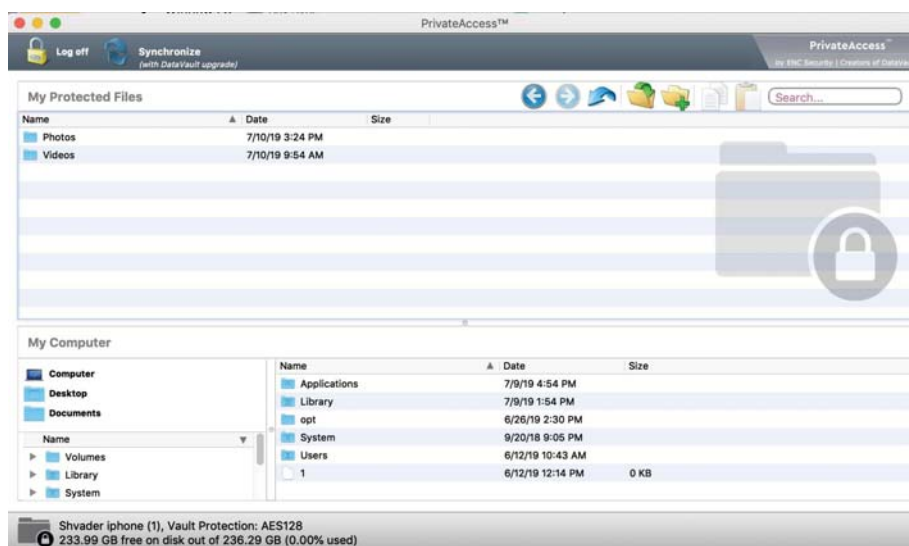
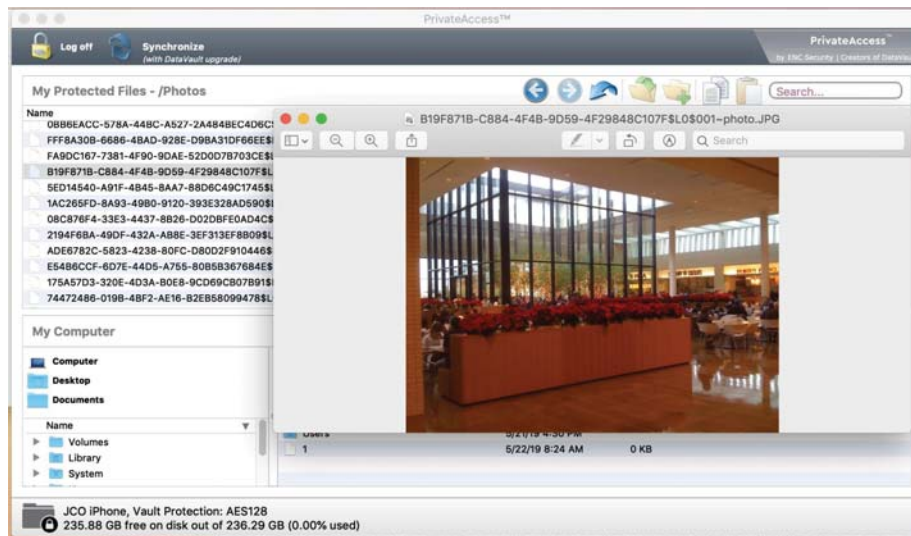


Fig. 8

4) You can double click on a folder to open it, and then double click on a photo or video to view it. (Fig. 10)

Fig. 10



You can also drag and drop photos from your Vault to another location on your computer! (e.g. Desktop)